



*Japanese Ceramics*  
Philippe Barde - Toshio Matsui

Castelló, 41. Madrid.

A Japanese Ceramic Exhibition, why?

May be since Ceramics are a major art in Japan.

And why Madrid?

May be because it's the 150 anniversary of the relationship between Japan and Spain.

May be because my lifetime took me to the country of the rising sun to meet its great artists, sharing with my friend Álvaro Alcázar our interest in art.

Surely because every morning we may reinvent ourselves with a new adventure.

Our life is dual. An exchange between countries, Orient and Occident, Japan and Spain, a reciprocal friendship shared between two artists Philippe Barde and Toshio Matsui, incited us to show these new Japanese ceramics to Madrid.

Ceramics are earth and fire, ancient and primitive but in Asia and of course in Japan, they are the mirror of a culture.

Each clay belongs to a specific place which has its telluric history: its geology, its properties, its qualities and different malleability.

Fire, burning sometimes for a week is a force like an earthquake or a volcano but always part of everyday life . As one opens the kiln there is always doubt: how did the stoneware

react, how did the ashes burn the piece and reveal new colours, what dissolved under the heat

.  
Ceramics are vital, physical and mental. In Japan, people accept to live with natural elements and allow themselves be annihilated by universal force. There is always an acceptance without rebellion of the environment as part of the universe.

In this art, the ceramist, despite his knowledge, his technic and experience, is always at the mercy of fire, water and clay... Every piece displayed today is a victory.

This art is a philosophy, the representation of a way of life. . It expresses the meaning of religion (Zen) through the tea ceremony which also lends beauty to the everyday.

The object and its use participate in an aesthetic act. Each piece fulfils its function as it evolves.. Actually chawans or tea bowls are not always fit for a ceremony. But this research, both material and intellectual is a modern display governed by qualitative norms inherited from a long tradition.

Its beauty is imperfect, never symmetric, resulting in the representation of an uneven and magnificent world.

Contemporary ceramics are representations of the world, combining to reveal a duel or a challenge with universal energy: Earth- Fire- Man.

This exhibition is an exploration, demonstrating how two well-known ceramists artists Philippe Barde and Toshio Matsui, both University professors collaborated in many projects throughout their life.

One comes from the Occident, Switzerland, the other from the Orient, Japan.

But both share the same love of clay, the pure essence of our earth, with the same tradition, culture and magnanimous will to reach the limits of their investigation.

Their fabulous complicity incited them to found the PT Project where they intermingled and shared works for over 20 years.

They represent the duality: Orient and Occident, an intellectual and technical union focusing on the same search. It is a friendship beyond self interest, creating and sharing pieces, in unison.

Caroline Caffin.

# Philippe Barde

Philippe Barde was born in 1955 in Geneva. He studied at the School of Fine Arts of Macon and the Applied Arts School in Geneva. He is a professor and head of the Department of Art and Design of the University of Geneva.

He has exhibited his work in institutions such as the Museum of Decorative Arts in Paris, the Baur Museum in Geneva, the West Fine Art Collège Gallery of the University of Shanghai and in galleries such as the Galerie Pierre, the Gallery du Vieux Bourg or the Galerie Rosa Turetski.

His creations in ceramics have been awarded with prestigious awards such as the Cairo Biennial (1992) or the Grand Prize of the World Ceramic Exhibition (2005) and they are in various collections such as the from the Museum Het Kruithuis, the Fine Arts Museum of Beijing, the Ceramic Museum of Cairo or the Badische Museum.

# Toshio Matsui

Toshio Matsui was born in 1955 in Osaka. After studying Art at the University of Kyoto with artists such as Kazuo Yagi or Osama Susuki, he received a grant from the Italian government to complete his training in ceramics in Faenza.

He has made exhibitions in international centers and galleries such as the Centro Culturale Italo-Giapponese in Kyoto, the The Moonlight Museum, the Koju Gallery and the Ariana Museum in Geneva. Among other awards and distinctions, he has received the Grand prix in the 40th edition of the International Competition of Artistic Cermiscs in Faenza (1982), the Excellent Prix of the Expo Awaji Hana Haku Japan Flora (2000) or the honorable mention of the World Ceramic Biennale Korea (2003).







YAKUSA WOOD  
PHILLIPE BARDE

Porcelain, red slip  
35 x15 x15 cm  
Soporte 10 x15 x 15 cm

YAKUSA WOOD  
PHILLIPE BARDE

Porcelain, white slip  
35 x15 x15 cm



RABA  
RAFAEL CANOGAR

2013  
Oil on fabric  
73 x 120 cm

BORN OF THE MOON  
TOSHIO MATSUI

Terracotta  
Alto: 56 cm  
Diámetro: 31 cm



S/T 9-10-17  
GUILLEM NADAL

2017  
Mixed technique on  
fabric  
170 x 170 cm

RED AND BLACK  
DAVID NASH

2008  
Pastel on paper with  
charred frame  
132 x 162 cm



ICESTORM  
PHILIPPE BARDE

Ceramic with iron slipe  
65 x 49 x 10 cm

MEMOIRE D'EAU  
PHILIPPE BARDE

Wateau memory pla-  
que , grès noir  
50 x 50 x 4 cm

MEMOIRE D'EAU  
PHILIPPE BARDE

Wateau memory pla-  
que , grès noir  
50 x 30 x 4 cm

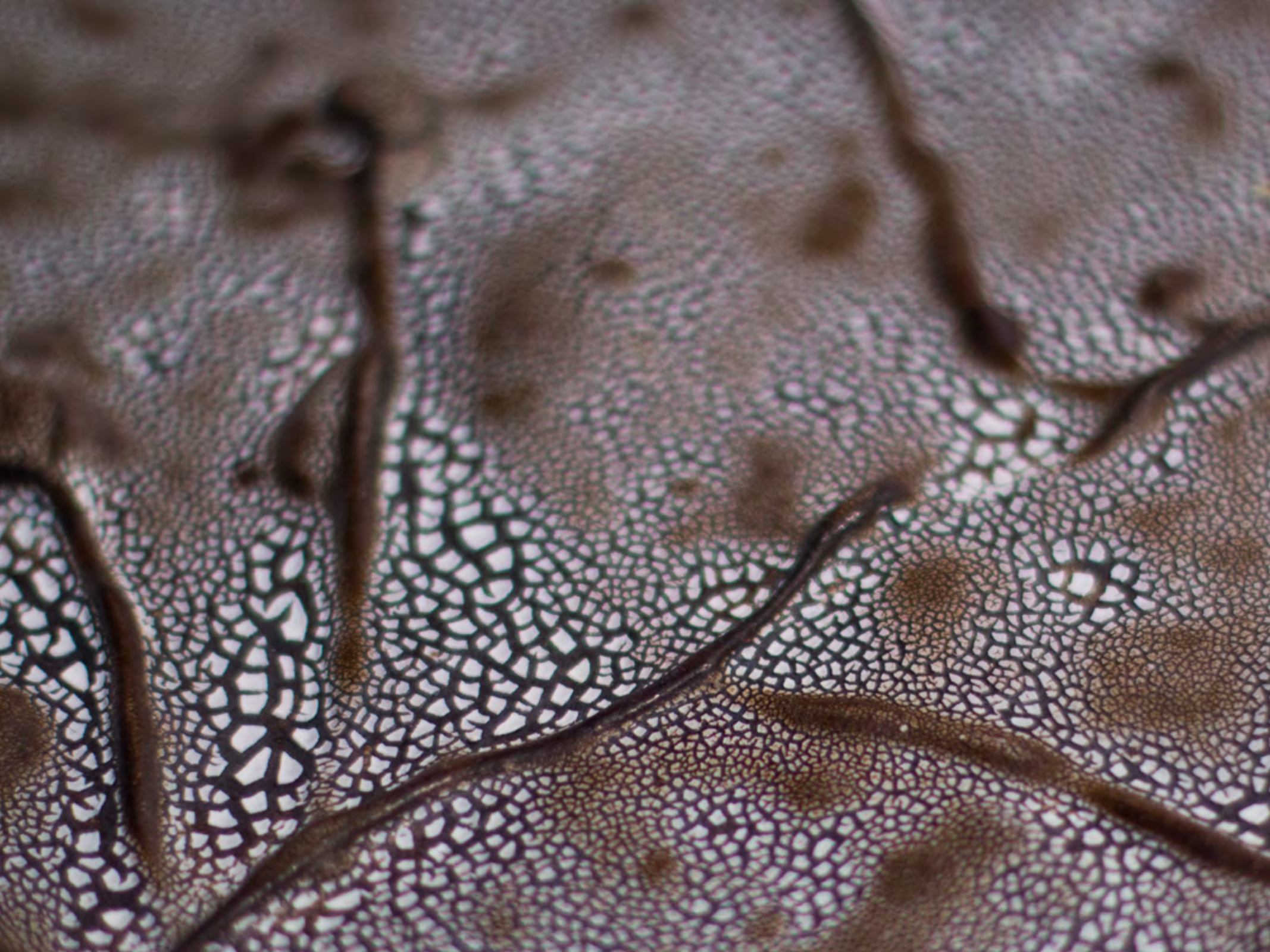




TEMPO AZZURRO  
TOSHIO MATSUI

Porcelain  
37 pieces installation









BORN OF THE MOON  
TOSHIO MATSUI

Terracotta  
Alto: 27 cm  
Diámetro: 63 cm

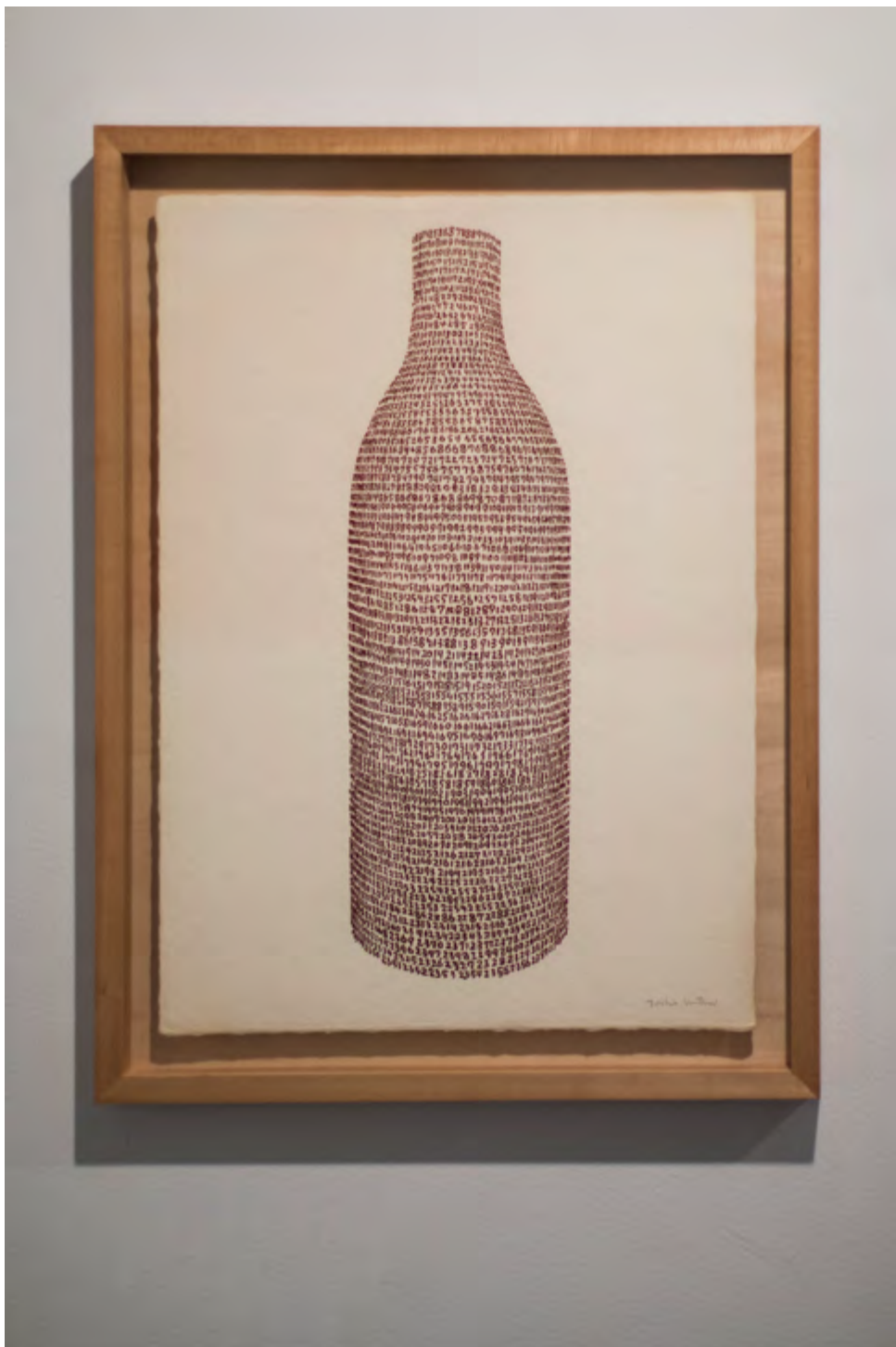


SMOKE SIGNAL I  
NIGEL HALL

2013  
Polished wood  
78 x 64,4 x 10 cm







COSMIC NUMBER  
TOSHIO MATSUI

Print with lacquer  
51,5 x 59 cm



TEMPO AZZURRO  
TOSHIO MATSUI

Porcelain  
Alto: 65 cm

TEMPO AZZURRO  
TOSHIO MATSUI

Porcelain  
Alto: 34 cm

TEMPO AZZURRO  
TOSHIO MATSUI

Porcelain  
Alto: 46 cm

TEMPO AZZURRO  
TOSHIO MATSUI

Porcelain  
Alto: 34 cm

TEMPO AZZURRO  
TOSHIO MATSUI

Porcelain  
Alto: 54 cm







TEMPO AZZURRO  
TOSHIO MATSUI

Porcelain  
Alto: 54 cm



AM 21.7.16  
PETER KRAUSKOPF

2016  
Oil on paper  
40 x 30 cm



9/17  
PETER KRAUSKOPF

2016  
Oil on paper  
40 x 30 cm



2017  
PETER KRAUSKOPF

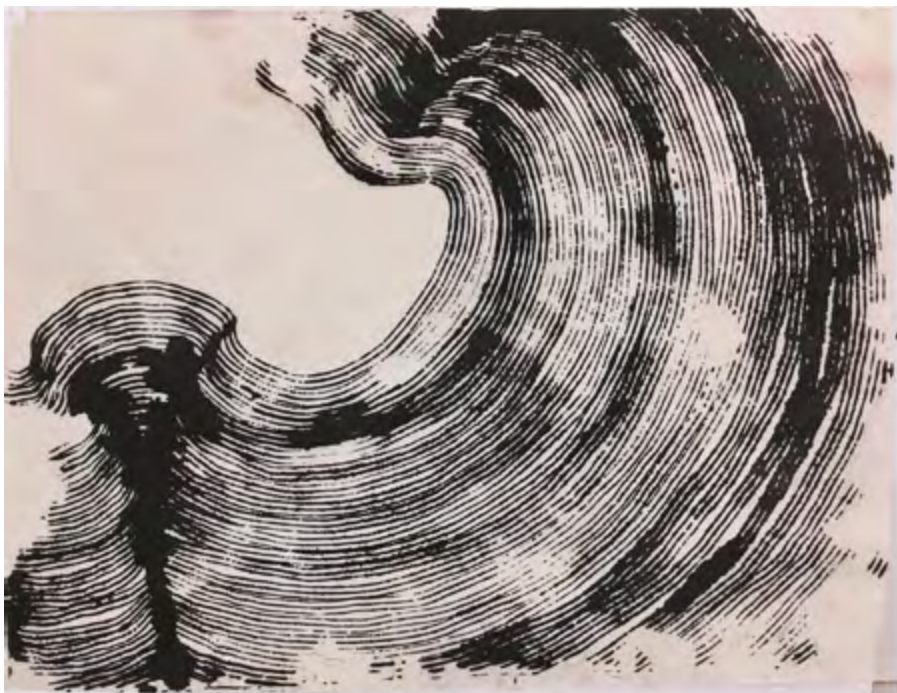
2017  
Oil on paper  
40 x 30 cm



9/17  
PETER KRAUSKOPF

2017  
Oil on paper  
40 x 30 cm

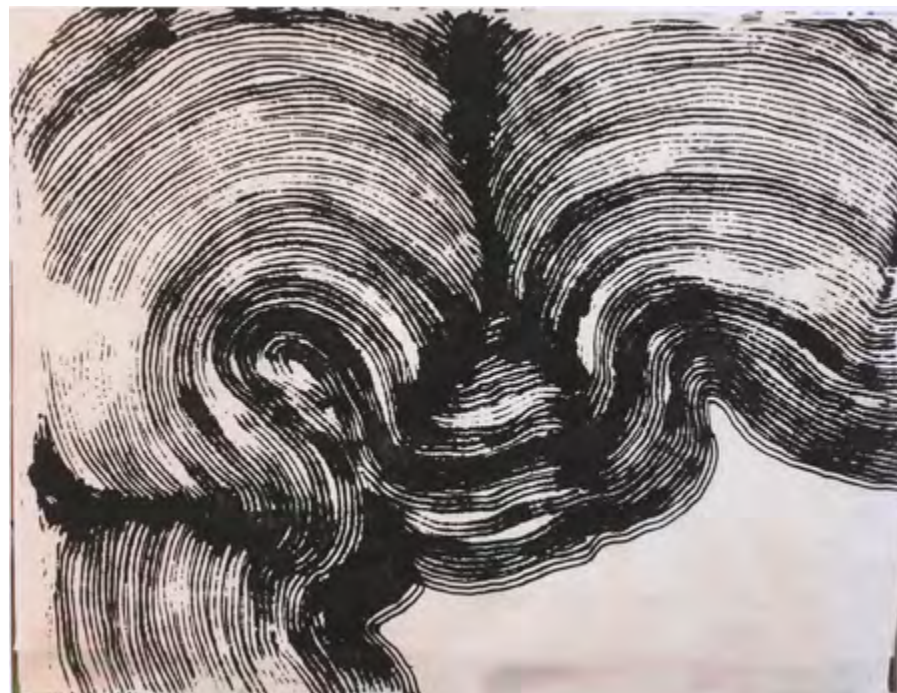




PROJECTE PER A UNA ILLA  
GUILLEM NADAL

Ed. 15 + 2PA + 1 PT

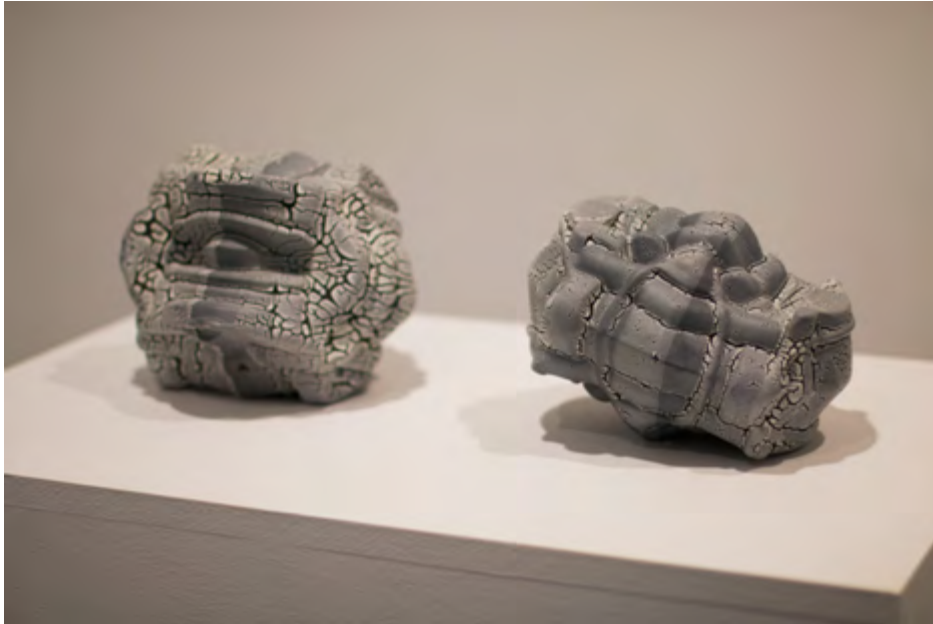
2018  
Aquatint on embossed copper  
80 x 105 cm.



PROJECTE PER A UNA ILLA  
GUILLEM NADAL

Ed. 15 + 2PA + 1 PT

2018  
Aquatint on embossed copper  
80 x 105 cm.



STONEWEAR  
PHILLIPE BARDE

Magnesium  
20 x 10 x 8 cm



STONEWEAR  
PHILLIPE BARDE

Magnesium  
20 x 15 x 15 cm

STONEWEAR  
PHILLIPE BARDE

Magnesium  
40 x 20 x 5 cm





DIVING FISH  
TOSHIO MATSUI

Lacqued terracotta  
Diámetro: 32 cm  
Alto: 11 cm



SIN TÍTULO  
ANTONIO MURADO

2010  
Oil on board  
40 x 30 cm

SIN TÍTULO  
ANTONIO MURADO

2008  
Oil on board  
40 x 30 cm

SIN TÍTULO  
ANTONIO MURADO

2008  
Oil on board  
40 x 30 cm





S/T 14-10-13  
GUILLEM NADAL

2013  
Mixed technique on  
paper  
90 x 150 cm.



BOURGEONS  
PHILLIPE BARDE

Varnished on white  
35 x 8 x 8 cm.



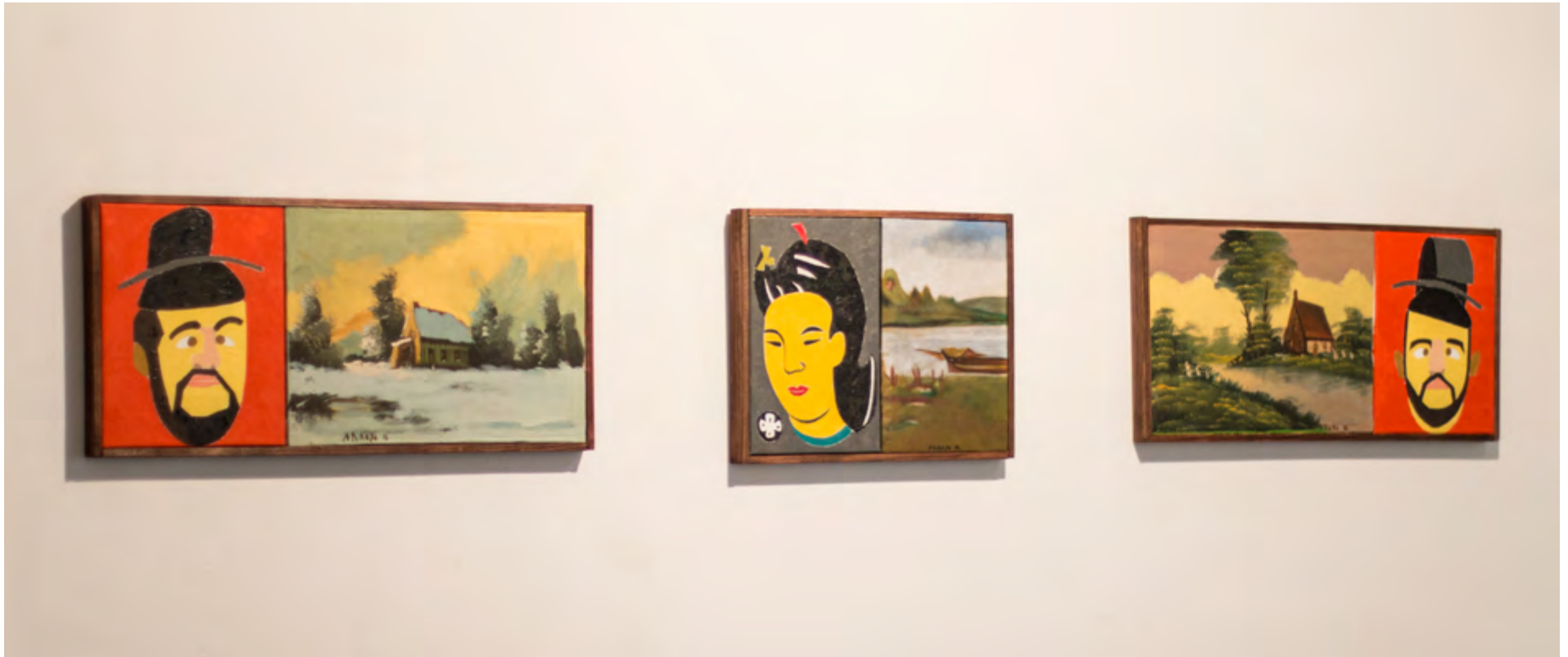
BOURGEONS  
PHILLIPE BARDE

Varnished on white  
35 x 8 x 8 cm.

BOURGEONS  
PHILLIPE BARDE

Varnished on white  
35 x 8 x 8 cm.





TOULOUSE-LAUTREC EN TOKYO I  
EDUARDO ARROYO

2016  
Oil on canvas  
24,7 x 55,5 cm

MADAME BUTTERFLY AU LAC DE CÔME  
EDUARDO ARROYO

2014  
Oil on canvas  
26,5 x 35 cm

TOULOUSE-LAUTREC EN TOKYO II  
EDUARDO ARROYO

2016  
Oil on canvas  
24,7 x 55,5 cm



ICESTORM  
PT PROJECT

Ceramic lacquered by  
smoke firing technique  
2 x 15 x 5 cm

ICESTORM  
PT PROJECT

Lacquered ceramic  
Diámetro: 15 cm



YAKUSA WOOD  
PHILIPPE BARDE

Porcelain, black slip  
15 x 7,5 x 7,5 cm

YAKUSA WOOD  
PHILIPPE BARDE

Porcelain, red slip  
30 x 15 x 15 cm





DEMOCRATIE  
PHILLIPE BARDE

64 half red smoke heads with  
black stone support



ALL THE SAME  
PHILLIPE BARDE

From the tree moulds, 66 silver  
heads



ICESTORM  
PT PROJECT

Ceramic lacqued by  
smoke firing technique  
and white lacquer  
Height: 20 cm  
Diameter: 15 cm



KUMIHAMA  
TOSHIO MATSUI

Painted and lacqued  
terracotta  
Height: 14'8 cm  
Diameter: 27 cm



SIN TÍTULO  
TOSHIO MATSUI

Painted and lacqued  
terracotta  
Height: 11 cm  
Diameter: 20 cm







ICESTORM VII  
PT PROJECT

Ceramic lacquered by smoke  
firing technique  
10 x 10 x 5 cm

STREET LIGHT  
SIMON EDMONDSON

2015  
Oil on canvas  
180 x 160 cm



TWENTY-TWO HOURS OF  
DREAMS 31  
UDO NÖGER

2017  
Charcoal on paper  
20 x 25,5 cm

TWENTY-TWO HOURS OF  
DREAMS 33  
UDO NÖGER

2017  
Charcoal on paper  
20 x 25,5 cm

TWENTY-TWO HOURS OF  
DREAMS 41  
UDO NÖGER

2017  
Charcoal on paper  
20 x 25,5 cm

TWENTY-TWO HOURS OF  
DREAMS 40  
UDO NÖGER

2017  
Charcoal on paper  
20 x 25,5 cm



SIN TÍTULO  
TOSHIO MATSUI

Lacqued terracotta  
Alto: 9 cm  
Diámetro: 40 cm



YAKUSA WOOD  
PHILLIPE BARDE

Porcelain, yellow slip  
35 x15 x15 cm  
Soporte 4 x 15 x15 cm

YAKUSA WOOD  
PHILLIPE BARDE

Porcelain, black slip  
35 x15 x15 cm  
Soporte 20 x15 x 20 cm





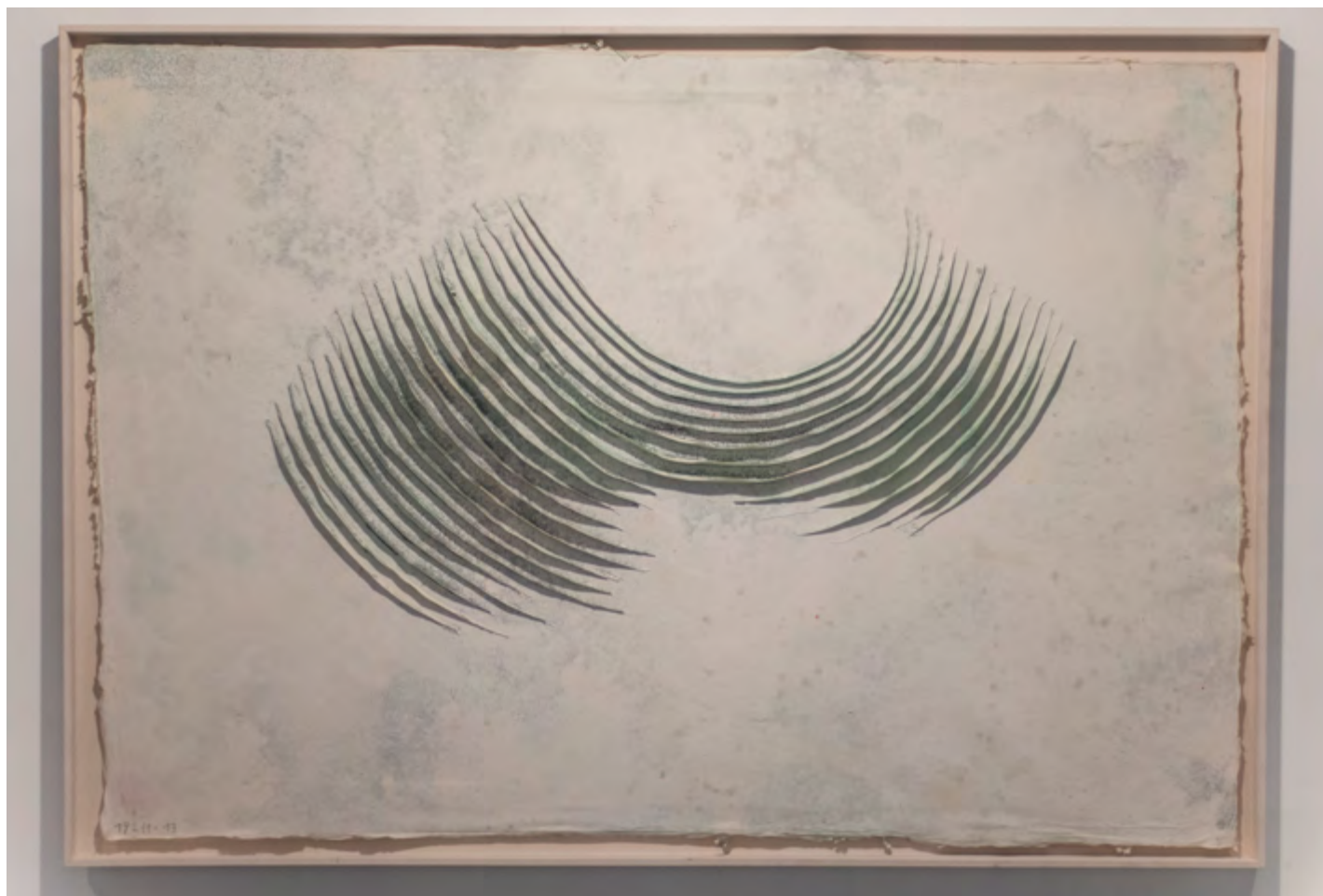
BORN OF THE MOON  
TOSHIO MATSUI

Terracotta  
Alto: 14 cm  
Diámetro: 39 cm



BORN OF THE MOON  
TOSHIO MATSUI

Terracotta  
32 x 35 x 8cm



S/T 19-11-13  
GUILLEM NADAL

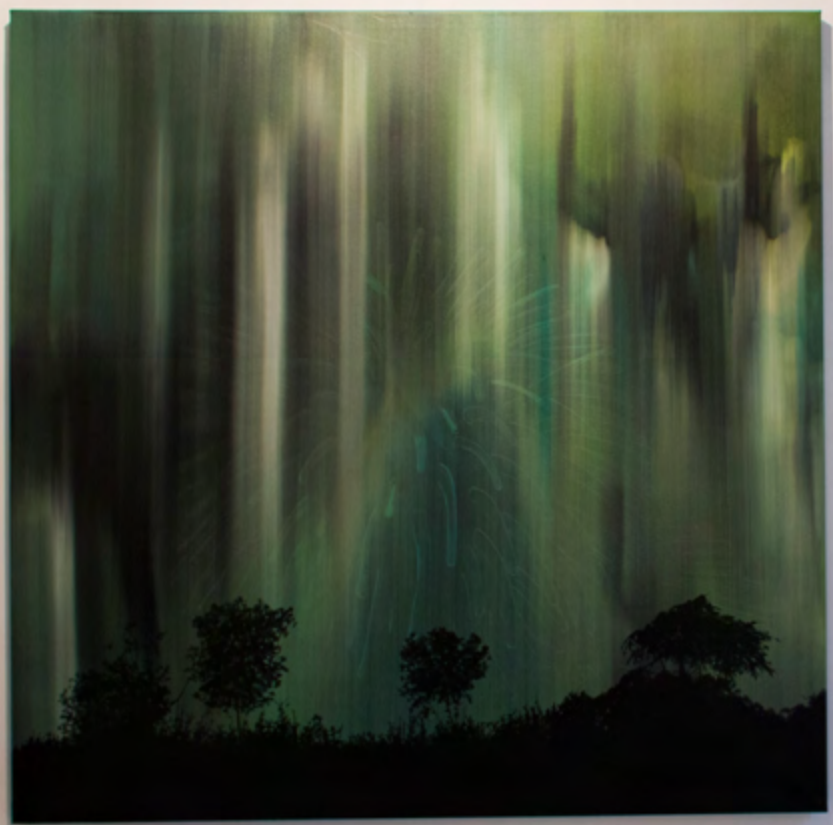
2013  
Mixed technique on paper  
100 x 145 cm.



HOMENAJE A HOKUSAI  
ÁNGEL ALEN

2018

Pencil , watercolour and  
pastel on Hahnemühle paper  
80 x 115 cm





SIN TÍTULO  
MARÍA ACUYO

2018  
Oil on canvas  
150 x 150 cm

BOTTOM OF THE COSMOS  
TOSHIO MATSUI

Lacqued terracotta  
Altura: 47 cm  
Diámetro: 29 cm





TEA BOWL  
TOSHIO MATSUI

Loza de barro  
8,5 x 13,5 x 14,8 cm

TEA BOWL  
TOSHIO MATSUI

Loza de barro  
8,5 x 14 x 13,5 cm



PT BOWL  
PT PROJECT

Cerámica al horno de leña  
ceniza natural  
8 x 12,5 x 12,2 cm

TEA BOWL  
TOSHIO MATSUI

Loza de barro  
8,5 x 14 x 15 cm

PT BOWL  
PT PROJECT

Cerámica al horno de leña  
ceniza natural  
8 x 13 x 13,2 cm

PT BOWL  
PT PROJECT

Cerámica al horno de leña  
ceniza natural  
8 x 12,5 x 12,2 cm



S/T 14-11-16  
GUILLEM NADAL

2016  
Técnica mixta sobre madera  
170 x 170 cm



CAROLINE CAFFIN, ÁLVARO ALCÁZAR, TOSHIO MATSUI & PHILIPPE BARDE

